

East Summits of Hemlock Mtn. from Winnisook Lake

240-7 9/16/07 with Paul Miskot John Wadlin

| Site | P | Δp | Δe | e calc | e map | t | R |
|--|-------|----------------|-----|--------|----------|------------------------|--|
| (A) Winnisook Lake | 29.08 | 0.00 | — | 0.868 | 2670' | 9:40 AM | $R_1 = \frac{3260' - 2670'}{29.08' - 28.40'} = \frac{590'}{0.68'} = 0.868$ |
| (B) Trail loop ^{log rd.} junc. on | 29.00 | 0.08 | 69 | 2739 | | | |
| (C) Leave log road | 28.98 | 0.10 | 87 | 2757 | | | |
| (D) Stumps | 28.96 | 0.12 | 104 | 2774 | | | |
| (E) Cross skid road up/down | 28.89 | 0.19 | 165 | 2835 | | | |
| (F) bare steep talus, ¹⁰ | 28.78 | 0.30 | 260 | 2930 | e.p. 526 | | |
| (G) Slingerland Trail Plaque | 28.63 | 0.45 | 391 | 3061 | | | |
| (H) 1st fir; <u>Ilex</u> thickets | 28.57 | 0.51 | 443 | 3113 | | | |
| (I) Lookout, Hemlock | 28.55 | 0.53 | 460 | 3130 | | 10:20 to 10:30 | |
| (J) highest point on trail | 28.52 | 0.56 | 486 | 3156 | | 10:35 | |
| (K) 1 fir on ledge | 28.48 | 0.60 | 521 | 3191 | | | |
| (L) 1st Summit, 3260' | 28.40 | 0.68 | 590 | 3260 | 3260' | 10:50 AM | |
| (LI) cross blaze | — | — | — | — | — | 10:55 | |
| (M) W end of 1st peak | 28.40 | 0.68 | 590 | 3260 | | 11:03 | |
| (N) firs | 28.48 | 0.60 | 521 | 3191 | | | |
| (O) 1st col | 28.52 | 0.56 | 486 | 3156 | 3140 | | |
| (P) 2nd summit, e knob | 28.48 | 0.60 | 521 | 3191 | < 3200 | 11:40 to 12:02 (lunch) | |
| (Q) open DP glades, on 2nd summit extensive <u>2 photos</u> | 28.45 | 0.55 | 470 | 3150 | 3200 | 12:07 | $R_2 \text{ (firs)} = 0.950$ |
| (R) 2nd col | 28.63 | 0.37 | 352 | 3022 | 3040 | 12:43 | |
| (S) } vegetation description | 28.49 | 0.51 | 485 | 3155 | | 12:50 | |
| (T) } | 28.45 | 0.55 | 523 | 3193 | | | |
| (U) Hemlock Summit | 28.39 | 0.61 → 0.60 | 570 | 3240 | 3240 | 1:36 am. | |
| * (FF) SUB out | 28.70 | 0.38 | 330 | 3000 | | | |

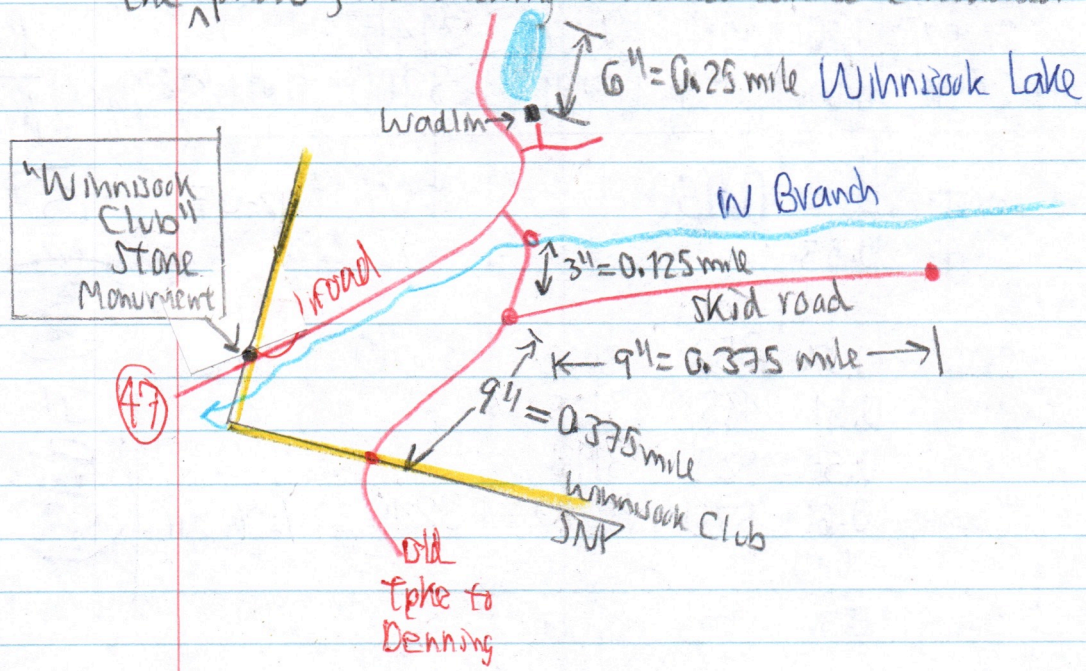
240-8
K2

0.950 R2

| | | | | | | | |
|----|--------------------------|-------|-------|------|------|------------|---------|
| U | 3rd summit (Hemlock Mtn) | 28-40 | 0.60 | 570 | 3240 | 3240' | 2:10 W |
| V | begin steeper descent | 28-48 | 0.52 | 494 | 3164 | | |
| W | top high ledge | 28-52 | 0.38 | 361 | 3031 | | |
| X | bottom " " | 28-67 | 0.33 | 314 | 2984 | 3100' down | |
| Y | open ledge | 28-76 | 0.24 | 228 | 2898 | | |
| Z | SUB down | 28-97 | 0.03 | 29 | 2699 | | |
| AA | several large SUB | 29-14 | -0.14 | -133 | 2537 | | 3:13 |
| BB | Cross brook | 29-17 | -0.17 | -162 | 2477 | | |
| CC | enter highway | 29-24 | -0.24 | -228 | 2442 | | 3:27 |
| DD | Winnissock Marker | 29-22 | -0.22 | -209 | 2461 | | |
| A | Winnissock Lake | 29-00 | 0.00 | ← | — | 2670 | 3:50 PM |

3240' (Hemlock Mtn) - 2670' = 570' = 0.60" = 0.950

John Wadlin has an aerial photo (large sheet) showing a log road, now a trail, which follows the W Branch Nerevensink up on the south bank. Using the length of Winnissock Lake, 0.25 mile, as 6" on the ^{aerial} photo, the following distances can be calculated:



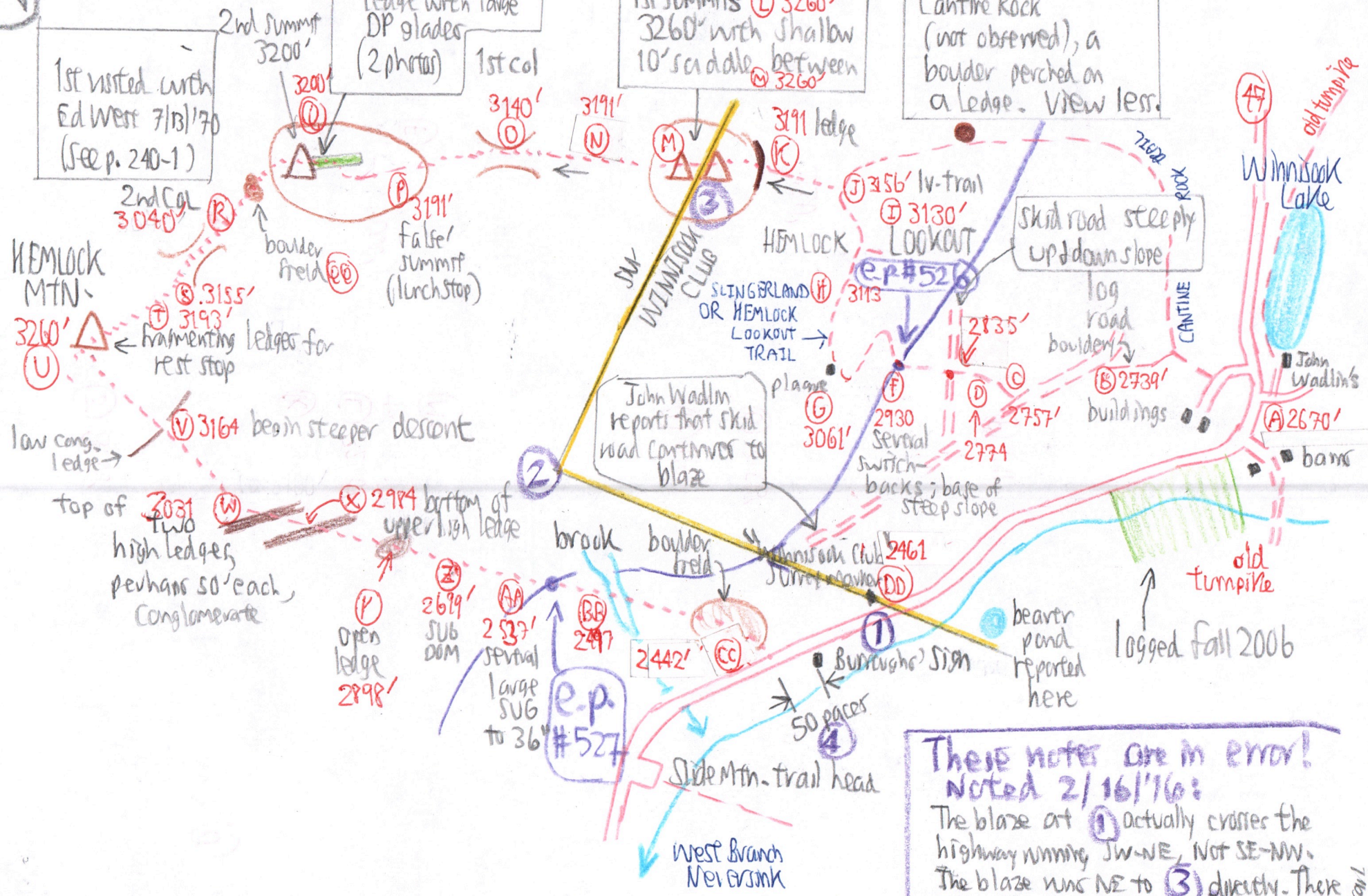
240-9

1st visited with Ed West 7/13/70 (See p. 240-1)

"bony" east spur ledge with large DP glades (2 photos) 1st col

1st summits 3260' 3260' with shallow 10' saddle between 3260'

Pronounced "Can. fine" Cantire Rock (not observed), a boulder perched on a ledge. View less.



These notes are in error!
 Noted 2/16/16:
 The blaze at ① actually crosses the highway running JW-NE, NOT SE-NW. The blaze was NE to ③ directly. There is NO corner at ②. There IS a corner at ④ when the line turns SE up to street → Trail

Vegetation

240-10

- (B) 2739' ASH
- (D) 2757' stumps suggest logging ca. 1992
- (E) 2930' Base of steep slope; no more stumps or log roads above. Talus. Enter 1^o at e-p#526

Ilex mont, SORB seedl + sapl.
 (FF) SOG out definitely by 3000'; prob. at by (F)

(G) Slingsland Trail Plaque 1986, installed in middle of 1st-lege at 100th Anniversary of Winnisook Club. 1st fir sapling above.

(H) 3113' Terrace with Ilex montana thickets, a 4" x 20' Fir; trail heads N.

First lookout = Azalea, Nemo, SORB, VACC-PIN

(I) HEMLOCK LOOKOUT 3130'. This is its name, but no hemlock here.

Sign says:
 Canopy 20' at lookout.

| |
|--|
| Cantine Rock 0.28 mile Lodge 0.6 mile via Cantine Rock Trail Lodge 0.8 mile via Slingsland (Hemlock, or this) Trail Lookout |
|--|

1 FIR + 1 dead FIR, BC, RM, YB

4 Photos: ① Slide Mtn over Winnisook Lodge
 ② Slide N to Schekelmoote
 ③ Wildcat Range + downstream along W Branch Nevernink

(J) 3156' Leave trail into DP glade with BC dom + some RM-MO-B. The forest continues this way, almost unchanged, all the way to Hemlock Mtn. (U)
 \$CAMOYL turning purple

(K) 1 Fir on ledge
 (L) 3260' 1st Summit has 2 peaks with a shallow col barely 10' deep. Blaze crosses the ridge in the shallow col.

(M) BC dom + RM, B, YB, 20' to 25' to 30' canopy. Two FIR on W peak 25' x 6". SM in fl + fruit, \$CAMOYL, RS, DP, PCILZ, Ox, AA, SORB seedl., NO CB. Semi-open with fern glades.

(N) 3191' 2 FIRS; 1 dead + 1 down (decapitated) standing

(O) 3156' Ice damage, more on north rim than on south. B look healthy. YB, RM, BC. COL, 1st

Begin ascent to 2nd summit = CB, VA, 26" YB, SORB 7", 1 FIR seedling

(P) 3191' 2nd Peak 3200', lunch on east shoulder. Canopy 40', BC dom, YB, RM, B, MO, RS, MC, Ox, \$int.

Large DP glade (2 photos) between lunch spot + summit. Scat. RM repro, PCILI, RS in the glade.

West shoulder, more forested, has Lyco annot, NEM seed on ledge down, SORB. CB abun. on ledge down. BCs to 16" to 22". Some healthy B 6" to 10". Lonitem can. 2 FIR sapl (contem. sapl)

Vegetation, Continued

240-11

heavily browsed. SORBS seedlings
abun. Boulder field Qe Ilex more,
CB, 2 FIR 20' x 4"

Dead fir brown & aromatic.

Bony, balding narrow crest. SORBS
25' abun., CB, 2 dead fir (one
ice-damaged & the other damaged by wind).

12=43 RG. Fir seedling + live fir 25' x 5"

R 3040 COL, 2nd. BC dom to 35', B,
RM. Mitch.

First ledge up 3 live fir at base, 5" x 20"
1 dead fir + 3 sapl. firs

Ice damage again more severe on N
edge of crest than on S. Many BC & RM
branches down. YB 26"

3155' S Fir seedling 3 firs 20' (one with
top ice-broken). YB 5 22" x 24"
2 Fir seedlings.

T 3193' 2 dead + 1 live fir. Two 5" fir
NKF, 6 live fir 1 dead fir,
several seedlings

U 3240' HEMLOCK MTN. One SUB 8".

Some ice damaged fir branches.
3 older fir. TB, OK, AA, Me.
Crest jointed in ledge at summit
BC 40' dom, RM, B, RS, FIR,
\$CAMPL, CINNA, PCTLI
Ice damage on N edge across all
tree spp. 2 seedling FIR at
2nd open lunch ledge.

V FIR, UVUL SESS, MONGROPA on
SE shoulder of Wemlock Mtn.
3164' Cong. ledge. \$int, TE, ILEX MONT

W 3031' SORBS, AZALEA, ILEX MONT, VA, TU

X Some SUB between 2 high ledges 2984'
SUB 22" on terrace cong.

Y 2998' Open ledge area on terrace,
flat.

BC mostly still, RM, CB, CX brown,
24" YB, HAMAM, few SUBs

Z 2699' SUB dom.

AA SUBs 30" to 36" in this size class 2527'

BB 2497' Double brook. Road in view
2" hem on talus. Two 4" FIR

CC 2425' Cross boulder field with YB dom,
+ several small HEM & FIR, within
sight of road.

DD ASH

A At S end of Winnitook Lake:
Solid grass + rug.

entry points

FH 526 is certain at base of talus ledges.

AA #527 is conservative because the
last big SUB end here on descent.
It is possible that 1^o comes down
to the road, but allow for a
barking swath for hemlock.

24012 Tally of fir + fir repro. on the ridge;
observed from Knob 3260' W to Hemlock Mtn.

| Site | Maturing | | | Sapling to the height of people | Seedling Several years old |
|--------|----------|------|------|---------------------------------------|----------------------------------|
| | live | dead | down | | |
| H | 1 | | | | |
| I | 1 | 1 | | | |
| K | 1 | | | | |
| M | 2 | | | | |
| N | 2 | 1 | 1 | | |
| O | | | | | 1 |
| P | | | | 2 | |
| Q | 3 | 3 | | | 1 |
| R | 3 | 1 | | 3 | |
| S | 3 | | | | 3 |
| T | 12 | 1 | | | |
| U | 4? | | | | 2 |
| V | 1 | | | | |
| TOTALS | 33 | 7 | 1 | 5 | 7 |

It appears as if repro. cannot replace
the existing live mature trees & the
population is decreasing. Some seedlings
may be overlooked; hidden under ferns, etc..
Winter would be a better time to see more complete tallies.